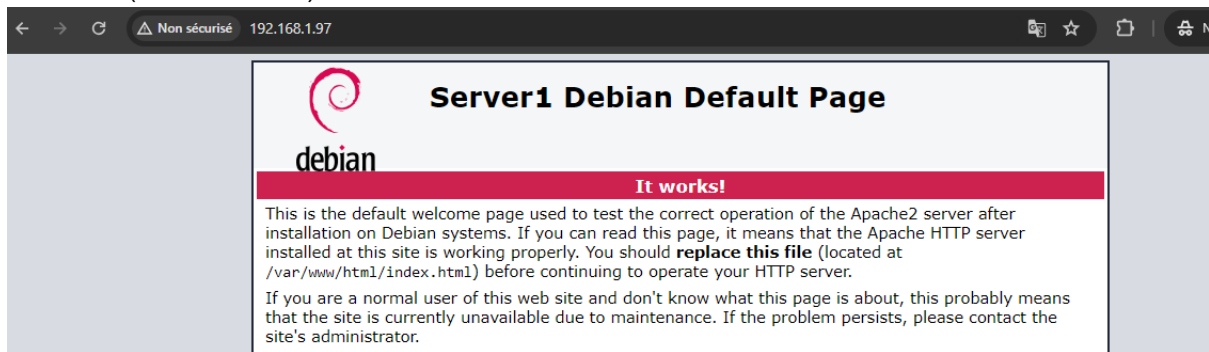
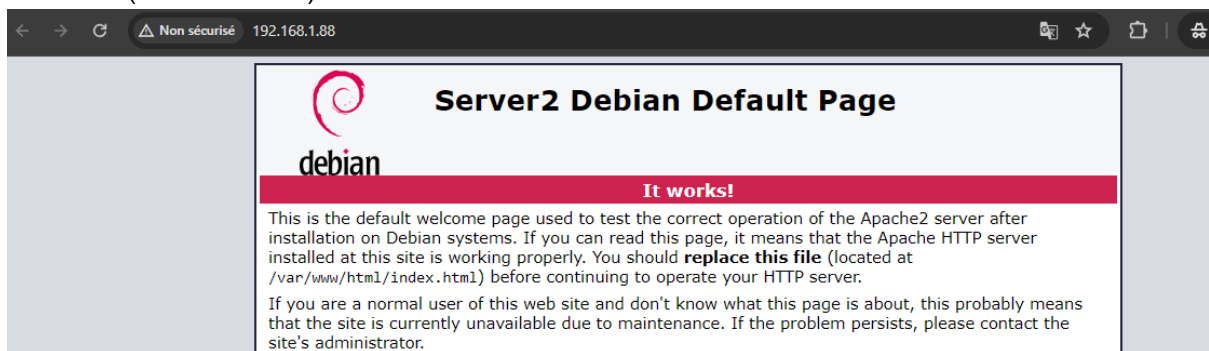


Haproxy

Server 1 (192.168.1.97)



Server 2 (192.168.1.88)



Sur le serveur haproxy

Installation de haproxy (apt-get install haproxy)

```
root@srvhaproxy:~# apt-get install haproxy_
```

Ajout des noms des serveurs web et leur adresse ip dans le fichiers hosts (/etc/hosts)

```
root@srvhaproxy:~# nano /etc/hosts_
```

```
GNU nano 7.2 /etc/hosts
127.0.0.1 localhost
127.0.1.1 srvhaproxy

# The following lines are desirable for IPv6 capable hosts
::1 localhost ip6-localhost ip6-loopback
ff02::1 ip6-allnodes
ff02::2 ip6-allrouters
```

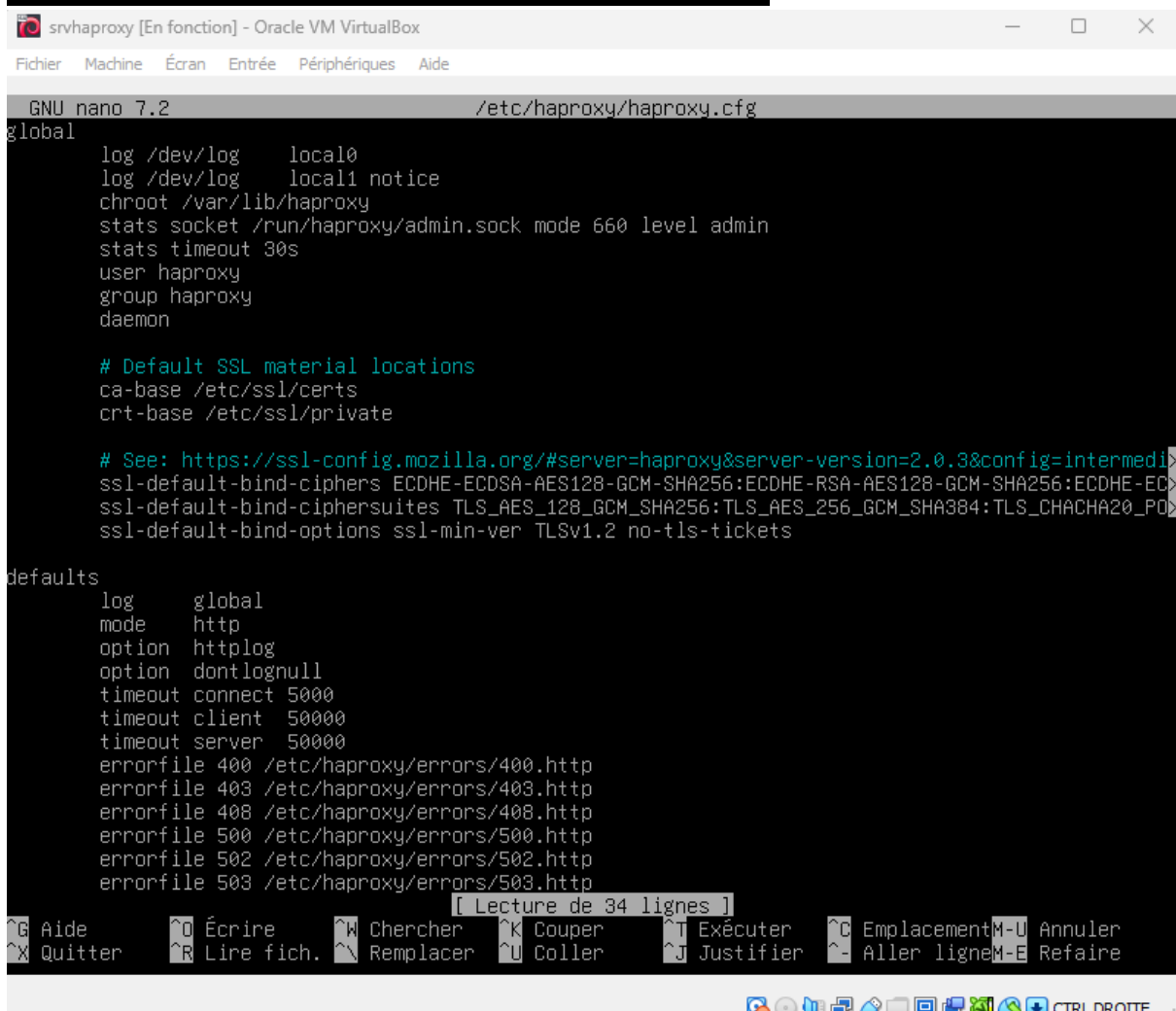
```
GNU nano 7.2 /etc/hosts *
127.0.0.1 localhost
127.0.1.1 srvhaproxy

192.168.1.97 srvweb1
192.168.1.88 srvweb2

# The following lines are desirable for IPv6 capable hosts
::1 localhost ip6-localhost ip6-loopback
ff02::1 ip6-allnodes
ff02::2 ip6-allrouters
```

Accéder au fichier de configuration de haproxy (etc/haproxy/haproxy.cfg)

```
root@srvhaproxy:~# nano /etc/haproxy/haproxy.cfg
```



```
GNU nano 7.2 /etc/haproxy/haproxy.cfg
global
    log /dev/log      local0
    log /dev/log      local1 notice
    chroot /var/lib/haproxy
    stats socket /run/haproxy/admin.sock mode 660 level admin
    stats timeout 30s
    user haproxy
    group haproxy
    daemon

    # Default SSL material locations
    ca-base /etc/ssl/certs
    crt-base /etc/ssl/private

    # See: https://ssl-config.mozilla.org/#server=haproxy&server-version=2.0.3&config=intermedi
    ssl-default-bind-ciphers ECDHE-ECDSA-AES128-GCM-SHA256:ECDHE-RSA-AES128-GCM-SHA256:ECDHE-EC
    ssl-default-bind-ciphersuites TLS_AES_128_GCM_SHA256:TLS_AES_256_GCM_SHA384:TLS_CHACHA20_PO
    ssl-default-bind-options ssl-min-ver TLSv1.2 no-tls-tickets

defaults
    log      global
    mode     http
    option   httplog
    option   dontlognull
    timeout  connect 5000
    timeout  client 50000
    timeout  server 50000
    errorfile 400 /etc/haproxy/errors/400.http
    errorfile 403 /etc/haproxy/errors/403.http
    errorfile 408 /etc/haproxy/errors/408.http
    errorfile 500 /etc/haproxy/errors/500.http
    errorfile 502 /etc/haproxy/errors/502.http
    errorfile 503 /etc/haproxy/errors/503.http

[ Lecture de 34 lignes ]
^G Aide      ^O Écrire
^X Quitter   ^R Lire fich.
^W Chercher  ^K Couper
^_ Remplacer ^U Coller
^T Exécuter  ^C Emplacement
^M-U Annuler ^- Aller ligne
^M-E Refaire
```

Ajouter les lignes suivantes

```
frontend http_front
    bind *:80
    stats uri /
    default_backend http_backend

backend http_back
    balance roundrobin
    server server1 192.168.1.97:80 check
    server server2 192.168.1.88:80 check

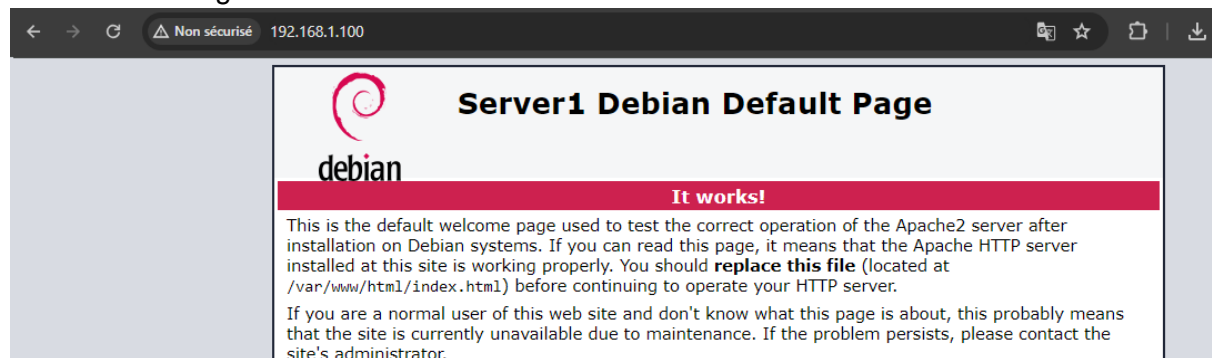
frontend http_front
    bind *:80
    stats uri /haproxy
    default_backend http_back

backend http_back
    balance roundrobin
    server server1 192.168.1.97:80 check
    server server2 192.168.1.88:80 check
```

Ip du serveur Haproxy (192.168.1.100)

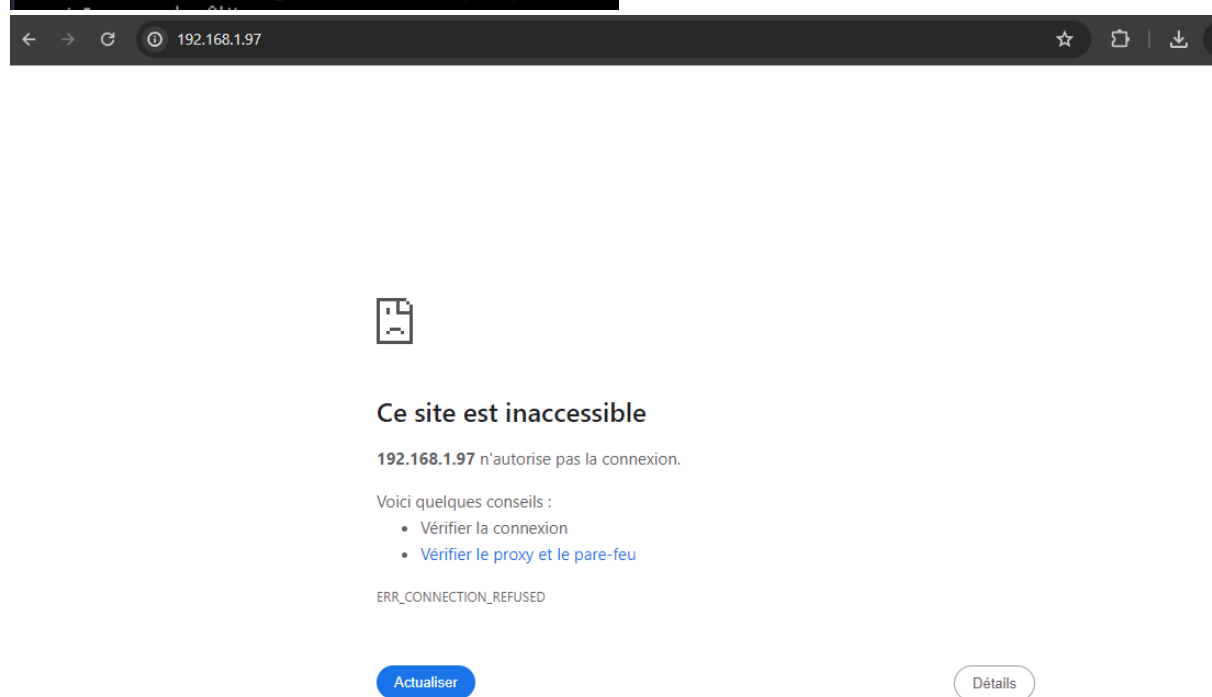
```
root@srvhaproxy:~# ip a
1: lo: <LOOPBACK,UP,LOWER_UP> mtu 65536 qdisc noqueue state UNKNOWN group default qlen 1000
    link/loopback 00:00:00:00:00:00 brd 00:00:00:00:00:00
    inet 127.0.0.1/8 scope host lo
        valid_lft forever preferred_lft forever
    inet6 ::1/128 scope host noprefixroute
        valid_lft forever preferred_lft forever
2: enp0s3: <BROADCAST,MULTICAST,UP,LOWER_UP> mtu 1500 qdisc fq_codel state UP group default qlen 1000
    link/ether 08:00:27:75:c8:23 brd ff:ff:ff:ff:ff:ff
    inet 192.168.1.100/24 brd 192.168.1.255 scope global dynamic enp0s3
        valid_lft 80327sec preferred_lft 80327sec
    inet6 2001:861:34c3:fd0:a00:27ff:fe75:c823/64 scope global dynamic mngtmpaddr
        valid_lft 86261sec preferred_lft 14261sec
    inet6 fe80::a00:27ff:fe75:c823/64 scope link
        valid_lft forever preferred_lft forever
root@srvhaproxy:~#
```

Cela nous redirige vers le serveur 1



Si nous stoppons le serveur 1

```
root@srvweb:~# systemctl stop apache2
```



Cela nous redirige vers le serveur 2

